



ESTER



ESTER



Ester is a new kind  
of glazing solution.  
Engineered to be  
an aesthetically  
beautiful window  
with the greatest possible  
passage of light,  
framed with natural materials.



*Section frame  
52 mm*

*Inner side frame  
width 44 mm*

*Only 69 mm of  
central mullion*



*Glazing to full  
aperture on the  
exterior side*

*Up to 40%  
more light than  
traditional windows*

*Excellent thermal  
performance*

# ESTER THE NEW GENERATION OF WINDOWS

## MONO-MATERIAL

TRADITIONAL WINDOW, WOOD, ALUMINIUM, PVC

## MULTI-MATERIAL

MIXED WINDOWS

## GLASS-MATERIAL

ESTER

Uncompromising and forward-thinking Italian design meets contemporary styling and modern energy efficiency credentials. Thin, sleek frames mean more glass and even more light.









# WOOD

A thrilling, natural material, wood offers a luxurious finish that thoroughly compliments Ester's frame and profile.





# METAL

Metal gives Ester a strong, technological and contemporary look, highlighting the window's slim profile and clean lines.







# EARTH

Sand. Clay. Soil.  
Rust. These unique  
materials frame  
Ester, providing a  
view not only to  
outside, but to  
the Earth too.



Ester perfectly captures light and space, with 40% more light than traditional windows. Italian design excellence for evolving interiors.



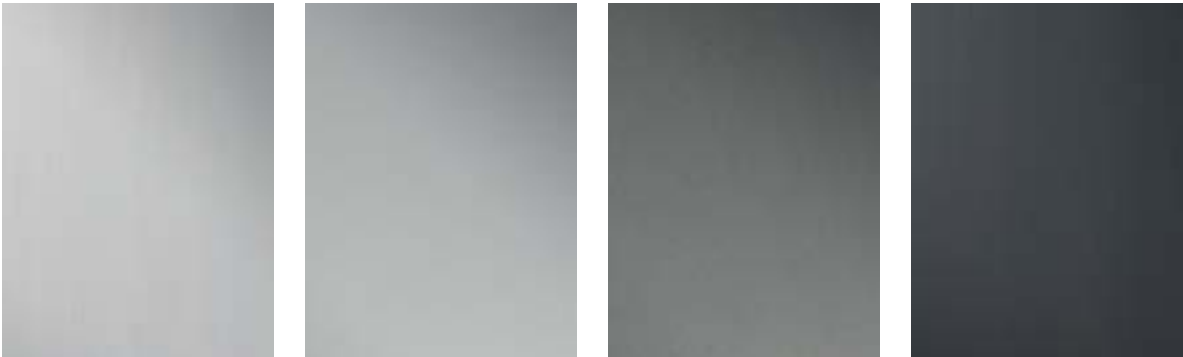
Profile on the view:  
only 69 mm of  
central mullion  
  
only 58 mm of  
lateral mullion

WOOD



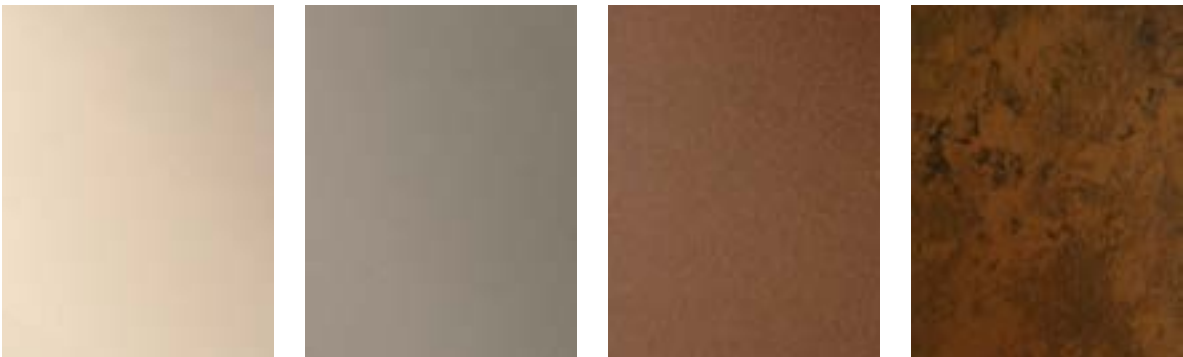
white oak      natural      tabacco      caffè

METAL



titanium      aluminium      steel      iron

EARTH



sand      earth      terracotta      corten

\* lacquered finish available in Ral colors







180° SASH OPENING

The new concealed hardware allows 180° opening



MICROVENTILATION

By turning the handle to 135° the minimal opening of the sash allows a correct change of the air safely



TILT AND TURN OPENING

By turning the handle to 180° the traditional tilt and turn opening is allowed



TWO SASHES OPENING

Only 69 mm of central mullion

1 SASH TECHNICAL DATA	DOUBLE GLASS	TRIPLE GLASS
Maximum sash surface	Window 1.300x1.500 (1,95 mq) Door window 1.000x2.400 (2,4 mq)	Window 1.300x1.500 (1,95 mq) Door window 900x2.400 (2,16 mq)
Minimum sash dimensions	450x600 mm	
Minimum window dimensions	500x650 mm	
Maximum sash weight	100 kg	
Glass	33.1/24/33.1	33.1/10/4T/10/33.1
Frame profile	Thermal cut aluminium	
Sash section	60 mm	
Frame section	52 mm	
Cover frame	Width cover frame 44 mm only inner side	
Opening sash	180°	
Spacer	Warm Edge	
Gasket	Central (open joint)	
Hinges	Concealed	
Microventilation	Standard	
Thermal insulation	With Ug= 0,9 glass: Window Uw 1.40 W/m2K* Door window Uw 1.33 W/m2K**	With Ug= 0,6 glass: Window Uw 1.12 W/m2K* Door window Uw 1.04 W/m2K**
Noise reduction	Up to 40dB ***	Up to 42dB ***
Air tightness	Class 4	
Wind resistance	A5	
Water tightness	Window 1200 Pa - Door window 900 Pa	

2 SASHES TECHNICAL DATA	DOUBLE GLASS	TRIPLE GLASS
Maximum sash surface	Window 1.250x1.500 (1,9 mq) Door window 950x2.400 (2,28 mq)	Window 1.250x1.500 (1,9 mq) Door window 850x2.400 (2 mq)
Minimum sash dimensions	450x600 mm	
Minimum window dimensions	1000x650 mm	
Maximum sash weight	100 kg	
Glass	33.1/24/33.1	33.1/10/4T/10/33.1
Frame profile	Thermal cut aluminium	
Sash section	60 mm	
Frame section	52 mm	
Cover frame	Width cover frame 44 mm only inner side	
Opening sash	180°	
Spacer	Warm Edge	
Central Mullion	69 mm	
Gasket	Central (open joint)	
Hinges	Concealed	
Microventilation	Standard	
Thermal insulation	With Ug= 0,9 glass: Window Uw 1.62 W/m2K* Door window Uw 1.55 W/m2K**	With Ug= 0,6 glass: Window Uw 1.33 W/m2K* Door window Uw 1,27 W/m2K**
Noise reduction	Up to 40dB ***	Up to 42dB ***
Air tightness	Class 4	
Wind resistance	Window A4 - Door window A3	
Water tightness	Window 900 Pa - Door window 750 Pa	

\* performance referred to specific test configurations: window dimentions 1230 mm x 1480 mm  
\*\* performance referred to specific test configurations: door window dimentions 1230 mm x 2180 mm  
\*\*\* data referred to the glass configured in noise reduction version





[esfinestra.com](http://esfinestra.com)

## BLUEBELL

Architectural & Design Products

---

### UK PARTNER

Unit 3 Martels Industrial Estate  
High Easter Road, Barnston  
Essex CM6 1NA

+44 (0) 1371 873313

[info@bluebellproducts.co.uk](mailto:info@bluebellproducts.co.uk)

[bluebellarchitecturalproducts.co.uk](http://bluebellarchitecturalproducts.co.uk)